



*jordan fishwick*

Low Leighton Road New Mills High Peak





## Low Leighton Road New Mills High Peak SK22 4JF

£280,000



### The Property

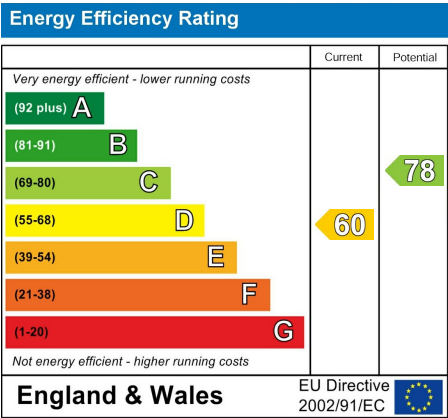
Backing onto open fields a larger than average end terrace property with accommodation over three floors. Well maintained and presented with two bedrooms plus additional loft room. Pleasant low maintenance rear garden with decking area adjoining open farmland plus a detached garage. Briefly comprising; living room, dining kitchen, ground floor wc, rear porch, two bedroom, family bathroom and second floor loft room with velux window. Conveniently located for New Mills train stations, shops and bus links.





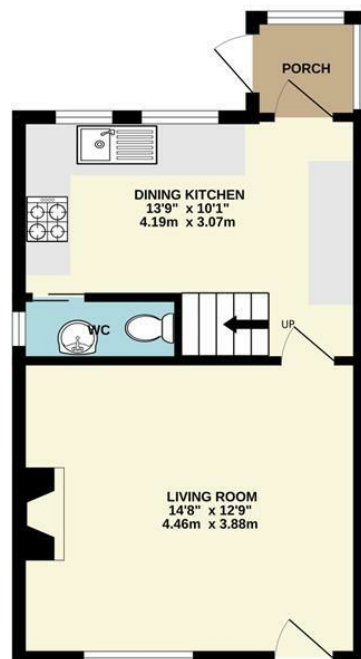
- Well Presented Large End Terrace Property Over Three Floors
- Two Good Sized Bedrooms Plus Loft Room
- Detached Garage and Rear Garden Adjoining Farmland
- Large Dining Kitchen
- Ground Floor WC
- Open Aspect to Rear and Lovely Views
- Convenient Location for New Mills Shops and Train Stations

Postcode SK22 4JF  
 EPC Rating D  
 Local Authority High Peak  
 Council Tax B

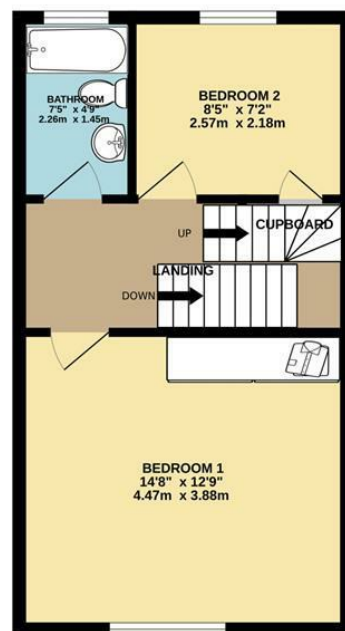




GROUND FLOOR  
353 sq.ft. (32.8 sq.m.) approx.



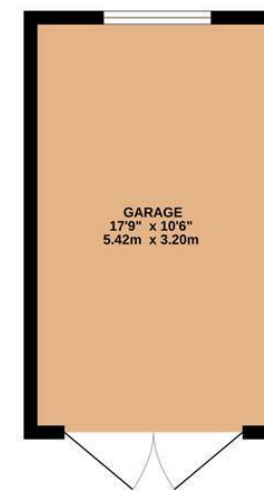
1ST FLOOR  
369 sq.ft. (34.3 sq.m.) approx.



2ND FLOOR  
173 sq.ft. (16.1 sq.m.) approx.



3RD FLOOR  
187 sq.ft. (17.4 sq.m.) approx.



TOTAL FLOOR AREA : 1082 sq.ft. (100.5 sq.m.) approx.

Whilst every attempt has been made to ensure the accuracy of the floorplan contained here, measurements of doors, windows, rooms and any other items are approximate and no responsibility is taken for any error, omission or mis-statement. This plan is for illustrative purposes only and should be used as such by any prospective purchaser. The services, systems and appliances shown have not been tested and no guarantee as to their operability or efficiency can be given.

Made with Metropix ©2025



These particulars are believed to be accurate but they are not guaranteed and do not form a contract. Neither Jordan Fishwick nor the vendor or lessor accept any responsibility in respect of these particulars, which are not intended to be statements or representations of fact and any intending purchaser or lessee must satisfy himself by inspection or otherwise as to the correctness of each of the statements contained in these particulars. Any floorplans on this brochure are for illustrative purposes only and are not necessarily to scale.

Offices at: Chorlton, Didsbury, Disley, Hale, Glossop, Macclesfield, Manchester Deansgate, Manchester Whitworth Street, New Mills, Sale, Wilmslow and Withington

14 Market St, Disley, Cheshire, Stockport SK12 2AA

01663 767878

disley@jordanfishwick.co.uk

www.jordanfishwick.co.uk